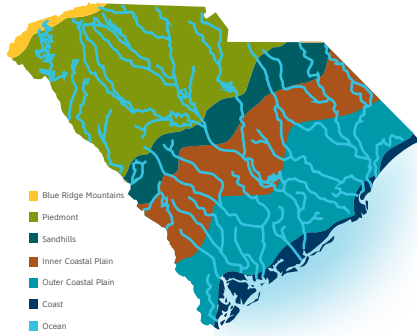
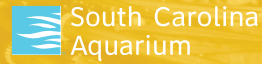
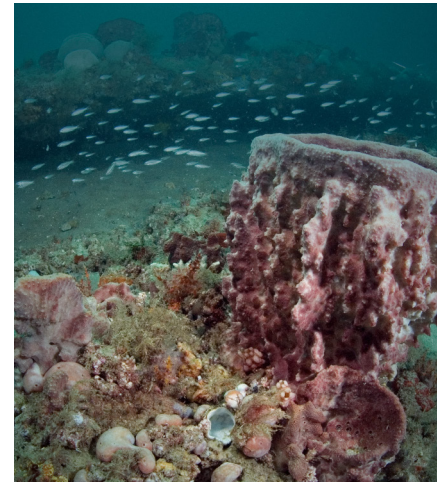


Ocean Region



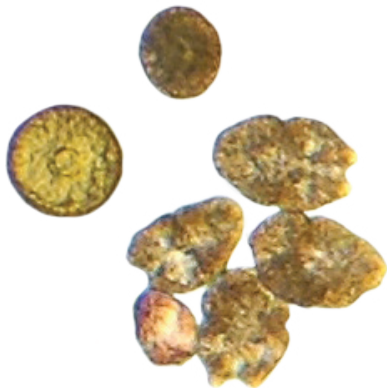
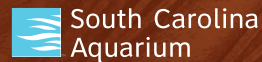
- Huge water region located off the coast of South Carolina
- Contains saltwater
- Contains ecosystems located near the coast
- Contains ecosystems located far away from the coast

Rocky Reef Ecosystem



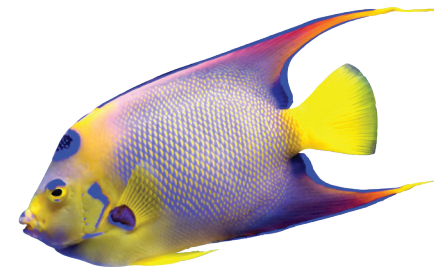
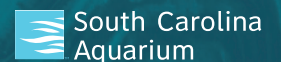
- This habitat is found in areas of salt water
- Often made of limestone; the ancient remains of animals, like corals and worms, that lived long ago
- Provides a place for animals like corals, sponges and barnacles to attach
- Animals attached to rocky reefs are often eaten by larger animals

Phytoplankton



- Microscopic plants living in salt water
- Form the base of many marine food chains
- Require light for photosynthesis

Queen Angelfish



- Fish that lives in saltwater near reef habitats
- Primarily feed on sponges
- Will hide in a hole or crevice to avoid predators

Loggerhead Turtle



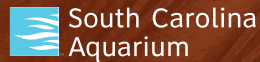
- Saltwater reptile
- Females come on shore to lay their eggs on the beach
- Adults eat seaweeds; juveniles eat things like crabs and snails

Cannonball Jelly



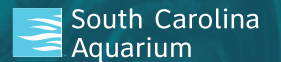
- Body is made up of 95% water
- Most common species of jelly in South Carolina
- Breathe by absorbing oxygen through their body
- Need saltwater to survive

Spider Crab



- Fuzzy, yellow to dark brown crab
- Young are found on the bells of cannonball jellies
- Decorate their shells for camouflage
- Are salt water scavengers (feed on dead plants and animals)

Black Sea Bass



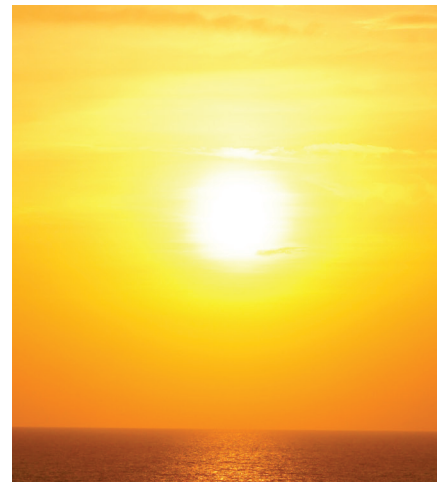
- Medium size saltwater fish that lives on rocky areas
- Eats worms, clams, crabs and small fish
- Fish frequently eaten by humans

Air



- Present in the atmosphere
- In the ecosystem to which this air card belongs, the saltwater at the surface contains more oxygen than the saltwater that is deeper

Sun



- Closest star to the earth
- Provides heat and energy to the earth through sunlight
- The sun provides energy for phytoplankton to photosynthesis in saltwater

Water



- The water in the ecosystem to which this card belongs is salty and abundant

Rock



- The rock in the ecosystem to which this card belongs was created by animals that lived long ago