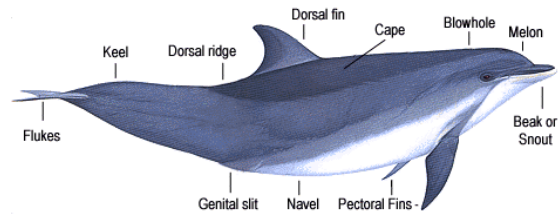
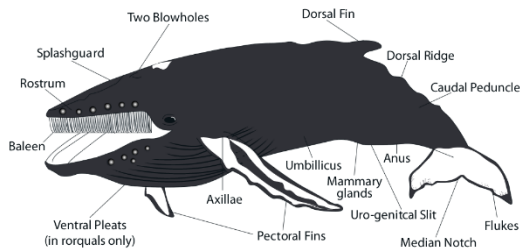


Marine Mammal Dichotomous Key

This marine mammal dichotomous key was made for this specific activity and cannot be used with all 100+ species of marine mammals.



- 1) Does your marine mammal have teeth? (you will see baleen if they have baleen)
 - a. If yes, go to #2
 - b. If no, go to #10
- 2) Does your marine mammal have whiskers?
 - a. If yes, go to #3
 - b. If no, go to #5
- 3) Does your marine mammal have ear flaps?
 - a. If yes, you have marine mammal A
 - b. If no, go to #4
- 4) Does your marine mammal have spots?
 - a. If yes, you have marine mammal B
 - b. If no, you have marine mammal C
- 5) Does your marine mammal have a long tooth coming out of its head?
 - a. If yes, you have marine mammal D
 - b. If no, go to #6
- 6) Does your marine mammal have a prominent beak (nose)?
 - a. If yes, go to #7
 - b. If no, go to #9
- 7) Is your marine mammal grey in color?
 - a. If yes, go to #8
 - b. If no, you have marine mammal E
- 8) Does your marine mammal have a dark black line from eye to pectoral fin?
 - a. If yes, you have marine mammal F
 - b. If not, you have marine mammal G
- 9) Is your marine mammal all shades of one color?
 - a. If yes, you have marine mammal H
 - b. If no, you have marine mammal I
- 10) Does your marine mammal have a dorsal fin?
 - a. If yes, go to #11
 - b. If no, you have marine mammal J
- 11) Does your marine mammal have white pigmentation (color) on the pectoral fins?
 - a. If yes, go to #12
 - b. If no, you have marine mammal K
- 12) Does your marine mammal have tubercles (knobs) on its head and lower jaw?
 - a. If yes, you have marine mammal L
 - b. If no, you have marine mammal M